

Clinical Pastoral Education Faculty

Dir. of Clinical Pastoral Education

Rev. Dr. Rosalynn Curry
ACPE Certified Educator
rosalynn.curry@wellstar.org
470-956-6893

CPE Educator

Rev. Sunghee Han
ACPE Certified Educator
sunghee.han@wellstar.org
470-956-8726

Certified Educator Candidate

Kari Pellegrino
ACPE Certified Educator Candidate
Kari.pellegrino@wellstar.org
470-956-6895



ACPE ACCREDITED

Wellstar CPE Center
is fully accredited through:

**ACPE – The Standard for Spiritual Care and
Education**

Lynnett Glass
Executive Director
ACPE Inc.

1 Concourse Pkwy, Suite 800
Atlanta, GA 30328
(404) 320-1472

How to Apply

- Visit our website at:
wellstar.org/spiritualhealth
- Download and complete the ACPE application
- Send your application to cpe@wellstar.org and call (470) 956-6891 to pay your \$60 non-refundable application fee or you may also mail your application along with your \$60 non-refundable application fee made payable to "Wellstar":

Wellstar CPE Center
Department of Spiritual Health
3911 Mulkey Way
Austell, GA 30106
- Tuition for the unit is \$500.



Wellstar



Wellstar CPE Center



Wellstar

What is CPE?

Clinical Pastoral Education (CPE) is reflective interfaith hands-on clinical ministry. You will be working with patients, families and staff to provide emotional, spiritual and human-centered care as you tend to individual sources of ultimate meaning. Students will learn essential caregiving interventions to provide evidence-based spiritual care.

What You'll Learn

You will have the opportunity to work with an educator and a small group of peers to reflect theologically following encounters, attempting to open up and penetrate matters that are present but hidden. As a CPE student you will reflect critically on yourself, both personally and professionally, developing insights into how you address and attend to crucial needs. You will also examine how you articulate spiritual meaning and help others to find meaning in their own personal faith practices and communities.

What to Expect

Fully accredited by the ACPE, Wellstar offers a comprehensive CPE program to qualified applicants without regard to race, culture, ethnicity, gender/gender identity, religious/spiritual beliefs or sexual orientation. The program provides students with an opportunity to learn through a blend of spiritual care, case studies, individual supervision, and group interaction.

A unit of CPE is accomplished through 400 hours of work. This includes a minimum of 100 hours of education, a minimum of 250 hours of supervised clinical practice in spiritual care and an additional 50 hours supporting the program as needed.

Why Wellstar?

- Flexible shifts
- We offer evening classes to accommodate working professionals. (*Evening classes are not available during the summer intensive unit.*)
- Chaplains are valued members of the medical team.
- You will work in a variety of clinical settings including trauma, Emergency Department, acute care, surgery, women's services, psychiatric care, oncology, neurologic care, pediatric care, senior assisted living, and more.

Clinical Placement Sites

Wellstar Kennestone Regional Medical Center
677 Church St., Marietta, GA 30060

Wellstar Kennestone Cancer Center
340 Kennestone Hospital Blvd
Marietta, GA 30060

Wellstar Atherton Place
111 Tower Road, Marietta, GA 30060

Wellstar Douglas Medical Center
8954 Hospital Drive, Douglasville, GA 30134

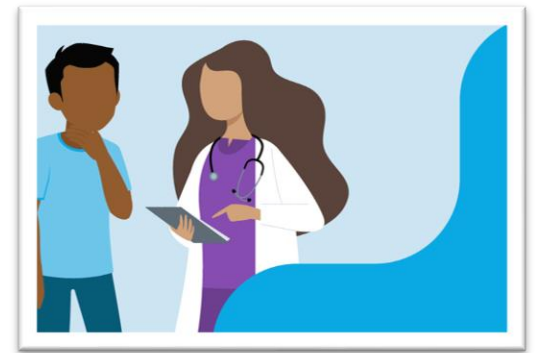
Wellstar North Fulton Medical Center
3000 Hospital Blvd., Roswell, GA 30076

Wellstar West Georgia Medical Center
1514 Vernon Road, LaGrange, GA 30240

Wellstar Spalding Medical Center
601 S. 8th St., Griffin, GA 30224

Wellstar Cobb Medical Center
3950 Austell Road, Austell, GA 30106

Wellstar Paulding Medical Center
2518 Jimmy Lee Smith Parkway,
Hiram, GA 30141



Upcoming Units

Summer 2025 CPE Unit:

May 27-August 10, 2025

Intensive Unit

(Full-time 40 hours/week)

Fall 2025 CPE Unit:

September 8–December 21, 2025

16-week Extended Unit

(Approximately 29 hours/week)

Academic CPE Unit:

September 8, 2025–April 12, 2026

30-week Extended Unit

(Approximately 15 hours/week)

Winter-Spring 2026 CPE Unit:

January 26-May 10, 2026

Extended Unit

(Approximately 29 hours/week)

